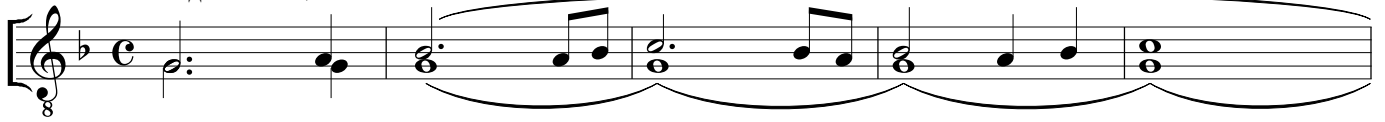


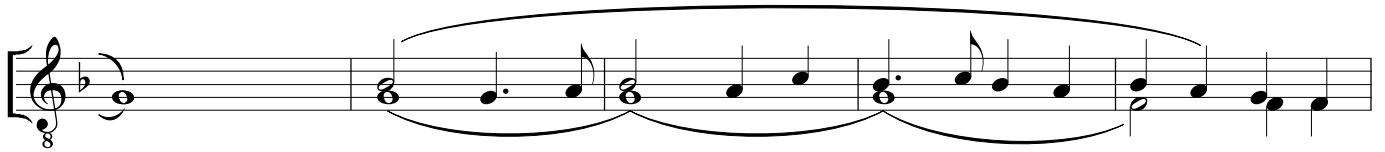
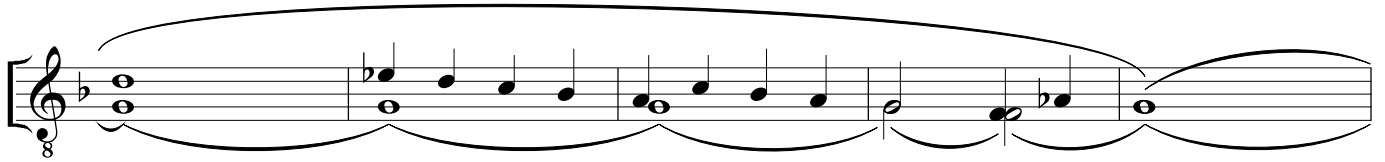
Да молчит всяка плоть

ИС

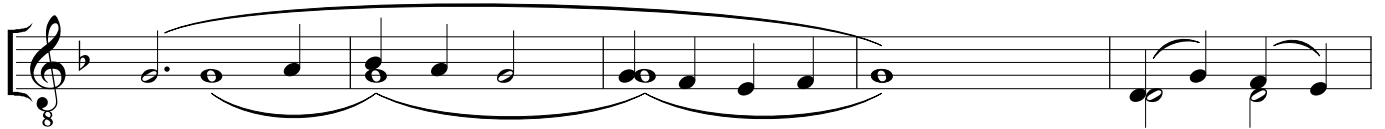
= Медленно= *)



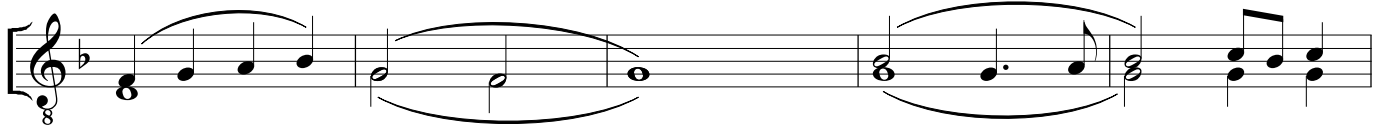
Да мол - чит



вся - - - - - ка - я



плоть че - ло -



ве - - - - - ча и да сто -



ит со стра - хом и тре - пе - том, и нич -

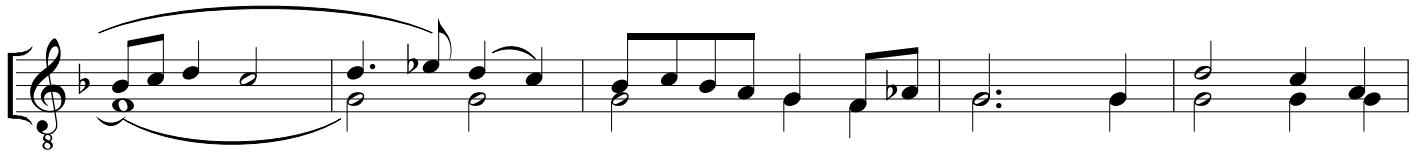


то - же зем - но - е в се - бе да по - мыш - ля - - - - - ет.

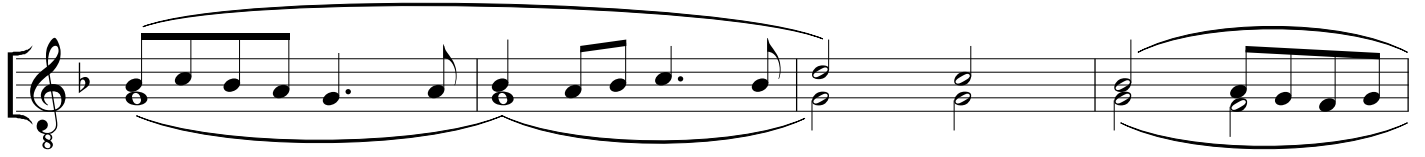


Царь бо цар - ству - ю - щих и Гос - подь

*) Возможно удвоение нижнего голоса в октаву



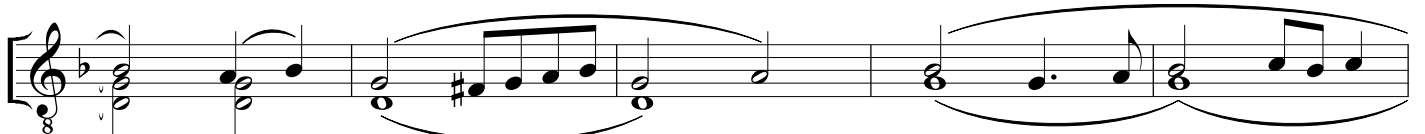
гос - под - ству - ю - щих при - хо - дит за -



кла - - - - - ти - ся

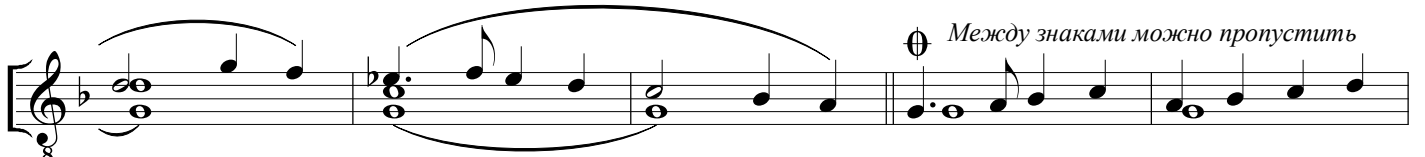


и да - - - - -

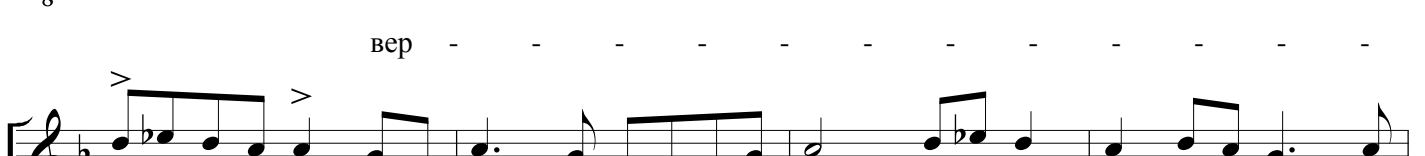


ти - ся

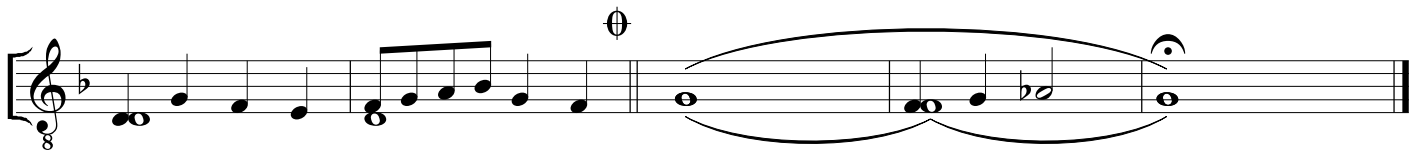
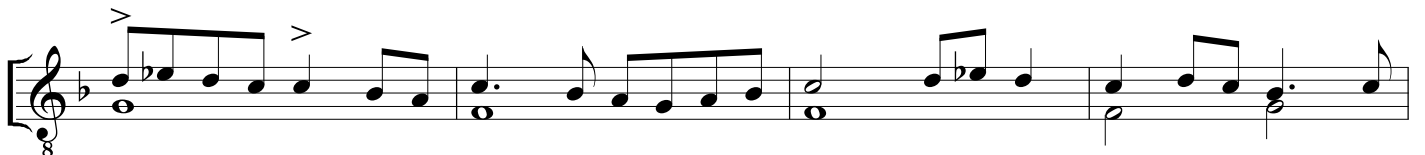
в снедь



⊕ Между знаками можно пропустить



вер - - - - -



НЫМ.

A musical staff in G major (one flat) with a treble clef. It contains a sequence of notes and rests, including a long note with a fermata at the end.

А - - - минь. Пред - хо - дят же Се - му ли -

A musical staff in G major with a treble clef, continuing the melody from the previous staff.

цы ан - - - - - гель - сти - и со

A musical staff in G major with a treble clef, continuing the melody.

вся - ким на - ча - лом и вла - сти - ю мно - го - о -

A musical staff in G major with a treble clef, continuing the melody.

чи - ти - и Хе - ру - ви - - - - ми и ше - сто - кри -

A musical staff in G major with a treble clef, continuing the melody.

ла - - - ти - и Се - ра - фи - ми ли - ца за - кры -

A musical staff in G major with a treble clef, continuing the melody.

ва - ю - ще и во - пи - ю - ще песнь: ал - ли - лу - - -

A musical staff in G major with a treble clef, concluding the piece with a fermata. The word "rit." is written above the staff.

и - я.

26.02.2009